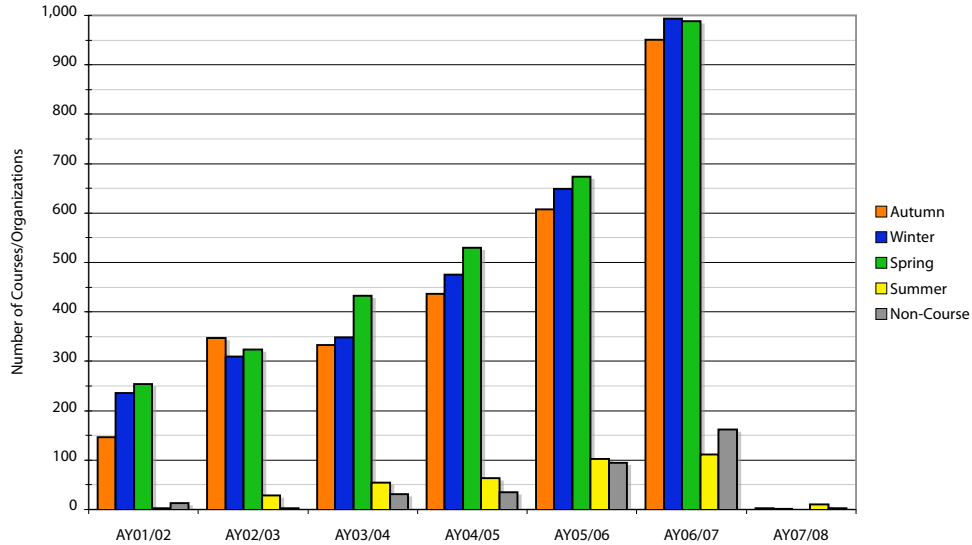


CHALK STATISTICS

Data as of May 14, 2007

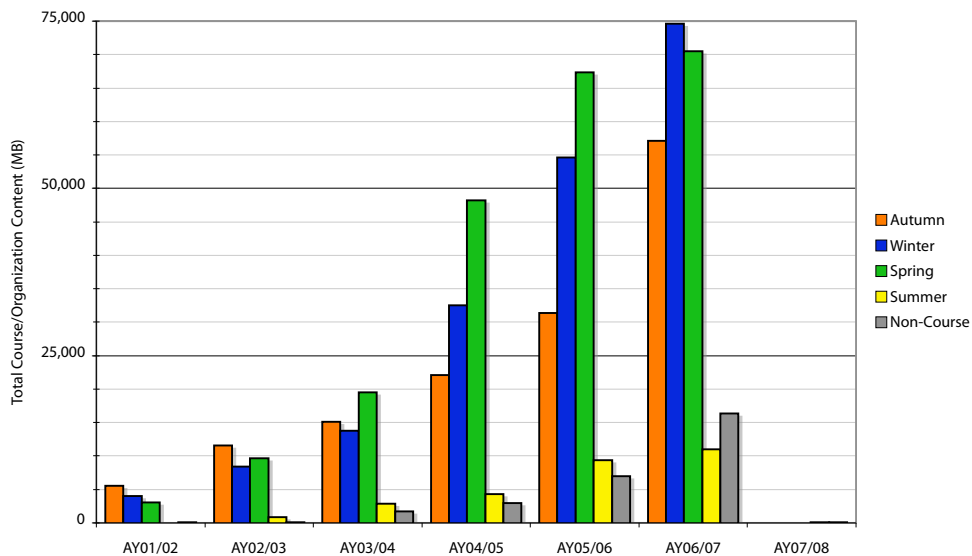
Courses/Organizations

	AY01/02	AY02/03	AY03/04	AY04/05	AY05/06	AY06/07	AY07/08	Total
Autumn	147	347	333	437	607	951	3	2,825
Winter	236	309	349	475	649	993	1	3,012
Spring	254	324	433	530	674	988	0	3,203
Summer	2	28	55	64	102	112	11	374
Non-Course	13	2	31	35	94	162	3	340
ACADEMIC YEAR TOTAL	652	1,010	1,201	1,541	2,126	3,206	18	9,754



Sizes (MB)

	AY01/02	AY02/03	AY03/04	AY04/05	AY05/06	AY06/07	AY07/08	Total
Autumn	5,544.2	11,579.1	15,119.1	22,142.2	31,419.1	57,124.4	25.0	142,953.2
Winter	4,046.7	8,377.3	13,760.1	32,539.8	54,596.7	74,633.1	0.0	187,953.7
Spring	3,035.7	9,684.3	19,508.4	48,169.6	67,393.7	70,460.5	0.0	218,252.3
Summer	35.6	848.1	2,844.3	4,341.2	9,354.4	10,987.6	90.1	28,501.4
Non-Course	62.7	113.1	1,703.0	2,971.4	6,972.5	16,311.5	137.2	28,271.5
ACADEMIC YEAR TOTAL	12,724.9	30,601.9	52,935.1	110,164.2	169,736.4	229,517.1	252.4	605,932.0

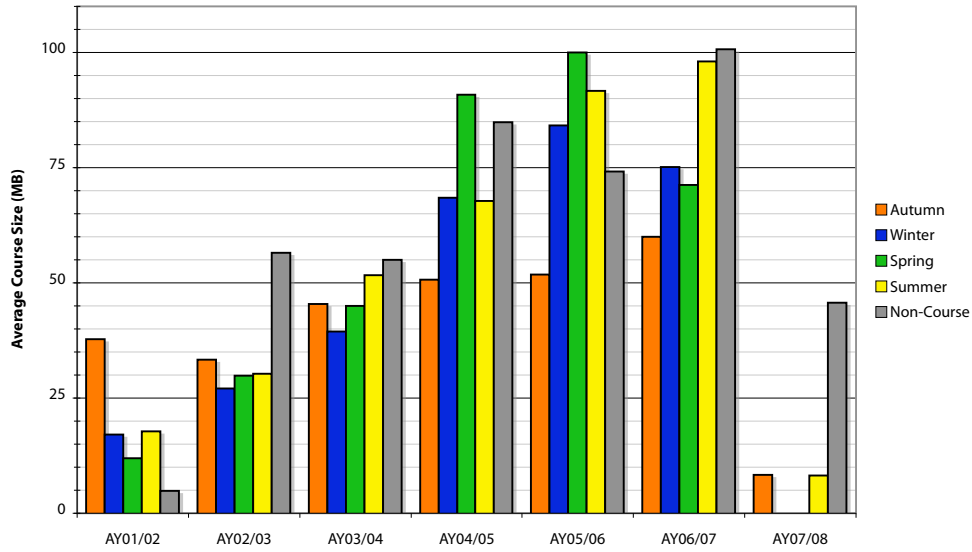


CHALK STATISTICS

Data as of May 14, 2007

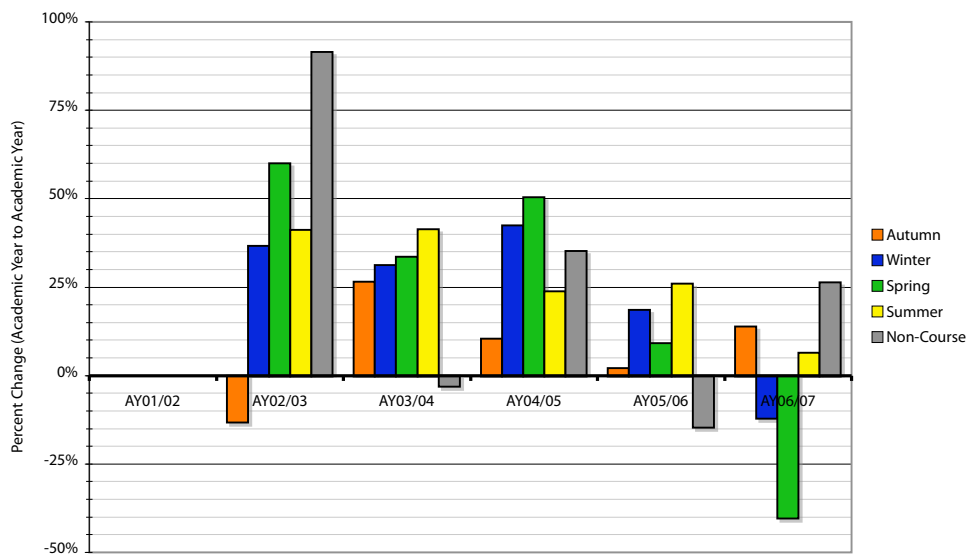
Average Course Size (MB)

	AY01/02	AY02/03	AY03/04	AY04/05	AY05/06	AY06/07	AY07/08	QTR AVG
Autumn	37.7	33.4	45.4	50.7	51.8	60.1	8.3	50.6
Winter	17.1	27.1	39.4	68.5	84.1	75.2	0.0	62.4
Spring	12.0	29.9	45.1	90.9	100.0	71.3	0.0	68.1
Summer	17.8	30.3	51.7	67.8	91.7	98.1	8.2	76.2
Non-Course	4.8	56.5	54.9	84.9	74.2	100.7	45.7	83.2
ACADEMIC YEAR AVERAGE	19.5	30.3	44.1	71.5	79.8	71.6	14.0	



Average Course Size Change AY to AY

	AY01/02	AY02/03	AY03/04	AY04/05	AY05/06	AY06/07	AY07/08
Autumn	0.0%	-13.0%	26.5%	10.4%	2.1%	13.8%	-619.5%
Winter	0.0%	36.8%	31.2%	42.4%	18.6%	-11.9%	-480918.7%
Spring	0.0%	60.0%	33.7%	50.4%	9.1%	-40.2%	0.0%
Summer	0.0%	41.2%	41.4%	23.8%	26.0%	6.5%	-1097.2%
Non-Course	0.0%	91.5%	-2.9%	35.3%	-14.5%	26.3%	-120.1%
ACADEMIC YEAR AVERAGE	0.0%	35.6%	31.3%	38.3%	10.5%	-11.5%	-410.5%

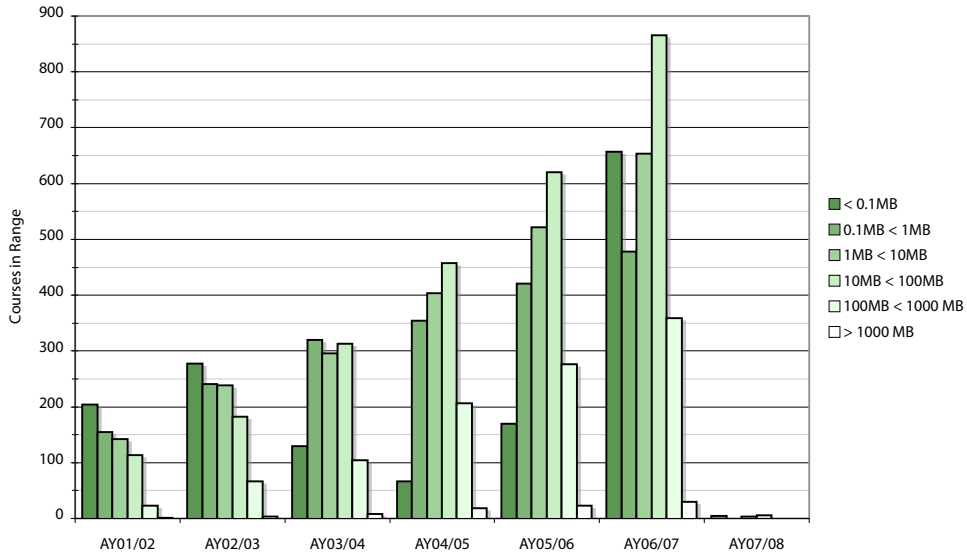


CHALK STATISTICS

Data as of May 14, 2007

Size (Clustered): Courses per Cluster

	AY01/02	AY02/03	AY03/04	AY04/05	AY05/06	AY06/07	AY07/08	Total
< 0.1MB	204	278	129	67	170	657	5	1,510
0.1MB < 1MB	155	241	320	354	421	478	0	1,969
1MB < 10MB	142	238	296	404	522	654	4	2,260
10MB < 100MB	114	182	313	457	620	866	6	2,558
100MB < 1000 MB	23	66	104	206	276	359	0	1,034
> 1000 MB	1	3	8	18	23	30	0	83
TOTAL (less Non-Course)	639	1,008	1,170	1,506	2,032	3,044	15	9,414



Size (Clustered): Fraction of Total

	AY01/02	AY02/03	AY03/04	AY04/05	AY05/06	AY06/07	AY07/08	Total
< 0.1MB	31.9%	27.6%	11.0%	4.4%	8.4%	21.6%	33.3%	16.0%
0.1MB < 1MB	24.3%	23.9%	27.4%	23.5%	20.7%	15.7%	0.0%	20.9%
1MB < 10MB	22.2%	23.6%	25.3%	26.8%	25.7%	21.5%	26.7%	24.0%
10MB < 100MB	17.8%	18.1%	26.8%	30.3%	30.5%	28.4%	40.0%	27.2%
100MB < 1000 MB	3.6%	6.5%	8.9%	13.7%	13.6%	11.8%	0.0%	11.0%
> 1000 MB	0.2%	0.3%	0.7%	1.2%	1.1%	1.0%	0.0%	0.9%

